

FOR OUTBOUND

**SCM**  
STUDENTS



School of Creative Media

香港城市大學  
City University of Hong Kong



**LEUPHANA**  
UNIVERSITÄT LÜNEBURG



**JOINT BA DEGREE**  
**SCM + LEUPHANA UNIVERSITY, GERMANY**  
**CREATIVE MEDIA + DIGITAL MEDIA**

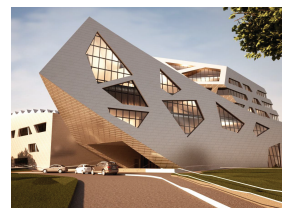
**2 DEGREES IN 4 YEARS**  
**UNIQUE OPPORTUNITY TO**  
**LIVE AND STUDY IN GERMANY**  
**GET COMPETITIVE EDGE**  
**FOR JOB + FURTHER STUDY**

---

**FREQUENTLY ASKED QUESTIONS**

---

# WHY JOINT DEGREE



## What is SCM/LU joint degree?

School of Creative Media and Leuphana University of Lüneburg, Germany, offer a joint degree programme in Creative Media / Digital Media. Both SCM and Leuphana students who participate in this programme will study for total 4 semesters at SCM and 4 semesters at Leuphana University, and get two degrees upon graduation.

## What is Leuphana University? Why is SCM collaborating with it?

Leuphana University is a dynamic small university on its way to academic excellence through a diverse research portfolio in Creative and Digital Media and a strong commitment in innovative undergraduate education, both evidenced by record-breaking amount of EU funding received. Leuphana is offering a BA degree in Digital Media, focusing on creative industries and digital media theory. We believe that Leuphana's BA

programme and SCM's BACM & BAS programmes together make a very good match in terms of their academic contents.

## Why study in Germany?

Although Germany is quite a small country, it is globally important in terms of art, science, finance, and politics. Among other things, German academia is historically known for its contributions in Media Theory and Philosophy. Currently Germany is the creative hub of Europe. German universities offer high-quality education and German degrees are recognized all over the world. Having a German degree enhances your opportunities of getting a job in an international organization or company.

Europe has a good system of affordable public transportation and Germany's location in the heart of Europe gives you an opportunity to travel around and experience different cultures and lifestyles.

## Why participate in the Joint Degree?

You will have the opportunity to live in Germany for two years. You will get two

BA degrees in the time usually spent for one degree. You will have a deep experience of living and studying in a foreign country. These will help you grow into a truly independent global citizen and give you a unique competitive edge for job market and further studies in Hong Kong, Europe, and elsewhere in the world.

## Is this the right thing for me?

If you are a BACM or BAS major or intend to declare either major, and, you are interested in creative industries and digital media theory, and, you are not afraid of life-transforming overseas experience, this is quite possibly the right thing for you. If you would like to work or study overseas after graduation, joining this programme will greatly enhance your chances.

## Will I have to pay more fees?

No. The joint degree arrangement operates with a fee waiver. You need to pay only SCM fees for the duration of the programme. As SCM will not cover accommodation and travel expenses, students may check if external scholarships are available (e.g. [DAAD](#)).

## What do I need to do to apply?

See the Admission Requirements and Selection Criteria and plan your studies accordingly. More information about the application procedures will be provided when appropriate.

# LIVING IN LÜNEBURG, GERMANY



## How about accommodation in Germany?

Leuphana University Housing Service arranges accommodation for international students in apartments either on or off campus. These co-ed non-smoking apartments typically consist of 2-4 single rooms, 1 or 2 bathrooms, and a kitchen, with room sizes between 12 and 25 square meters. The average rent for a single room in Lüneburg is 300-450 Euros per month. You may also choose to live with a Host Family - Leuphana University Housing Service can help you arrange this. For more information see "Accommodation" on Leuphana's [website](#).

## Can I work during/after my studies?

Foreign students are allowed to work in Germany. They need to have German language skills and can work for up to 120 days per year, or 240 half days. Foreign students may work in Germany for up to 18 months after graduating, however the job must be related to the field of study.

## Is it expensive to live in Germany?

Please visit [here](#) for living expenses including food, accommodation, local transport, entertainment, etc. Big cities like Berlin, München and Hamburg are more expensive, while smaller towns like Lüneburg are cheaper. Students are eligible for numerous price concessions.

## Is it cold in Lüneburg in the Winter?

Lüneburg has a relatively mild winter for an European country. All apartments have good insulation and proper heating. No need to worry.

## Should I use financial guarantee from my parents or Blocked Account as financial proof for applying for the German Student Visa?

Please check with the German Consulate in advance for the recognized financial proof in order to allow sufficient time for the visa application process. You may find information on Student Visa at the German Consulate General Hong Kong [website](#).

## Do I need to arrange health insurance during my stay at Germany?

Travel insurance is not accepted! International students must arrange health insurance with a statutory health insurance company. Please refer to LU's website for information on [Health Insurance](#).

## What do I need to pay attention to during my stay at Germany?

- Keep regular dialogue with SCM Academic Advisor
- Check CityUHK email account regularly
- Settle CityUHK tuition fee on time
- Provide updated contact information in Germany to the School General Office



# ACADEMIC MATTERS



## What kind of courses can I take at Leuphana, and can I transfer credit back?

You will follow Leuphana BA in Digital Media curriculum for four semesters, from Leuphana's Semester 2 onwards. (See [here](#) for the LU curriculum and Student Bulletin of SCM website for the sample study paths.)

## Will I have to make two Graduation Theses?

No. You will make only one Graduation Thesis.

## Will I have to know German language to apply?

No, but you will need to learn some German to be accepted. All Joint Degree courses at Leuphana University will be taught in English and Leuphana University has many visiting students from overseas who do not necessarily know German language. However, knowing the basics will be useful. To help you make the most of the two-year stay, we require that you take at least 3 credit units of German at CityUHK before departure for Germany. We also encourage you to continue studying German language while in Lüneburg.

## Will I have to defer graduation?

If you plan your studies ahead and fulfil the curriculum requirement specified in the study paths, you can graduate after 4 years of study with two degrees. See the sample study paths at Student Bulletin of SCM website for more information.

## When will I start/end at Leuphana?

The study period at Leuphana will be from beginning of Sem B of your Year 2 until the end of Sem A of your Year 4. You will come back to SCM for your remaining semesters.

## How about Leuphana's academic calendar?

Leuphana has two semesters, winter (1 October - 31 March) and summer (1 April - 30 September). There are breaks between lecture periods (roughly: August & September, and, February & March are holiday) and during national holidays. During the breaks, you don't have to stay in Lüneburg.

## What are the arrangements for my return to CityUHK?

Students may opt for either (1) resuming study at CityUHK on time for Semester B, with approval by Leuphana from leaving Leuphana before the end of Winter Semester; or (2) studying at Leuphana until the completion of Winter Semester and resuming study at CityUHK in the following academic year.

## I will return to SCM in the coming Semester B. How do I register courses?

Except for the core course(s), students are required to register courses, including SCM and GE courses, via AIMS themselves during the course add/drop period.

## What is the structure of the Leuphana programme?

Leuphana Semester (30 credit points)  
Complimentary Studies (30 credit points)  
Major (90 credit points)  
Minor (30 credit points)  
Total: 180 credit points  
SCM students will follow the sample study paths at the Student Bulletin.

## What is the Leuphana Semester?

SCM students will not attend the Leuphana Semester since the courses are offered in the first semester of the Leuphana programme. Leuphana will arrange credit transfer from SCM courses for the Leuphana Semester.

## I have completed all the Leuphana Free Elective (FE) courses according to the study plan. How will the earned credit units be transferred to my CityUHK degree requirements?

According to the study plan, SCM students have to complete at least 6 Free Elective (FE) courses (18 CityUHK credit units). Depending on individual students' study progress, students need to choose the remaining credit units earned from



# ACADEMIC MATTERS

Leuphana FE courses to fulfil the CityUHK requirement once the grades are available. They may choose the subjects with better grades for credit transfer and meeting the CityUHK graduation requirement (120 -144 credit units).

**The Leuphana elective courses on the Leuphana transcripts are not counted towards Leuphana requirements. Will their credits be transferred to fulfil the CityUHK requirements?**

The School will NOT transfer credits from Leuphana elective courses to CityUHK as elective courses are voluntary at Leuphana and not counted towards the 180 credit points required for their degree.

**The Leuphana minor course(s) that I have taken is/are counted as Leuphana elective courses and do not count towards the Minor requirements in the Leuphana transcript. Why?**

All Leuphana students register for a minor and SCM students should complete the procedures for declaring a minor. Non-declared minor course(s) will be

counted as Leuphana elective courses and are not counted towards Leuphana and CityUHK degree requirements.

**When I perform course registration in Leuphana, I cannot find the courses shown in the sample study paths.**

The sample study paths list out the modules of the Leuphana programme. A module comprises different types of courses. Students have to register for different course(s) offered under these modules in each semester.

**How will Leuphana grades be converted to CityUHK grades and vice versa?**

Students will be informed about the grade conversion arrangements upon admission to the Joint Degree.

**Will I finish both degrees at the same time?**

According to CityUHK regulations, students participating in the joint degree programme should fulfil the graduation requirements of both CityUHK and LeuphanaU degrees so that they will be eligible to graduate from the joint degree

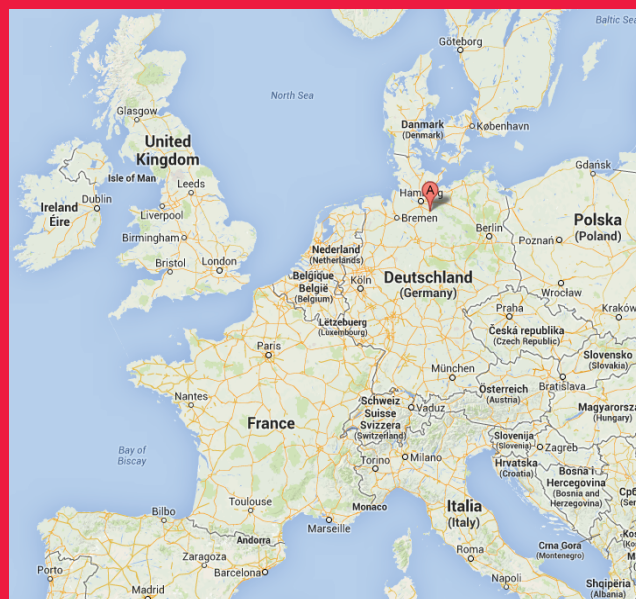
at CityUHK. Therefore, students should have completed the Leuphana degree requirement (180 credit points) and may have received the Leuphana award, before they can graduate at CityUHK. Students have to apply for graduation to CityUHK (via AIMS according to the schedule of ARRO) and to Leuphana separately. No late application for graduation will be accepted at CityUHK. These regulations apply to both inbound and outbound students.

**Is this a student exchange programme?**

No. Students who complete the graduation requirements of both CityUHK and Leuphana will get two graduation certificates.

## WHERE IS LEUPHANA UNIVERSITY?

Leuphan is located in a peaceful town of Lüneburg, about 25 minutes' local train commute from Hamburg (Germany's 2nd largest city) and 2 hours train journey from Berlin. Lüneburg has a lot of cultural heritage – an idyllic medieval town centre with iconic historical buildings and a rich cultural life with lots of student activities. Lüneburg is safe, accessible, and affordable and still conveniently located near big cities.



# OTHER INFORMATION

## ADMISSION REQUIREMENTS

SCM students to be selected to participate in the joint degree programme should at the end of Semester A of their second year:

1. Have completed 45 credit units of courses as listed below:
  - SM1702 Creative Media Studio I (6 CUs)
  - SM2702 Interdisciplinary Practices in Art, Science and the Humanities (3 CUs)
  - SM1701 Contemporary and New Media Art (3 CUs)
  - SM1103A Introduction to Media Computing OR CS1103B Media Computing (3 CUs)
  - SM2715 Creative Coding OR SM2716 Physical Computing and Tangible Media (3 CUs)
  - SM2706 Critical Theory & Socially Engaged Practices (3 CUs) - *to be substituted by a Group 3 Major Elective (3 CUs)*
  - Gateway Education / Major Elective / Free Elective Courses (21 CUs)
  - German Language Course (3 CUs)  
(The School encourages the students to take additional German course(s) before departure)

2. Having a good to excellent academic record, with Year 1 CGPA of 3.0 or above

Remark: Students who are required to take EL0200A and EL0200B are generally not considered.

## SELECTION CRITERIA

Participating students will be selected according to the following criteria:

- Year 1 CGPA
- Completion of courses as specified in the Admission Requirements
- Personal Statement on inspiration to participate in the Joint Degree (Letter of Motivation)
- Interview Performance (if applicable)
- Other supporting documents submitted by the students (if applicable)

## ASK YOUR OWN QUESTION

If your question was not mentioned here, have a look at the websites listed under "More Information". You can also contact the Associate Dean (Research, Postgraduate Programmes and Internationalization) :

Prof. Olli Tapio LEINO  
email: [otleino@cityu.edu.hk](mailto:otleino@cityu.edu.hk)  
tel.: 3442 4711  
office: CMC M6017

General Enquiry  
email: [scmlu.jdegree@cityu.edu.hk](mailto:scmlu.jdegree@cityu.edu.hk)

## MORE INFORMATION

[Leuphana BA in Digital Media](#)

Leuphana's [information page](#) for incoming international students, with lots of information about accommodation, cost of living, lifestyle, etc.

Leuphana [Housing Services](#)

Leuphana's [Academic Calendar](#)

Lüneburg in [Wikipedia](#) and [Wikitravel](#)

About [cost of living](#) in Germany